



Improving efficiency of CO₂ compression for CCS and EOR with reciprocating compressors and diaphragm pumps

Case study for 30 t/h CO₂ vs. 200 bar

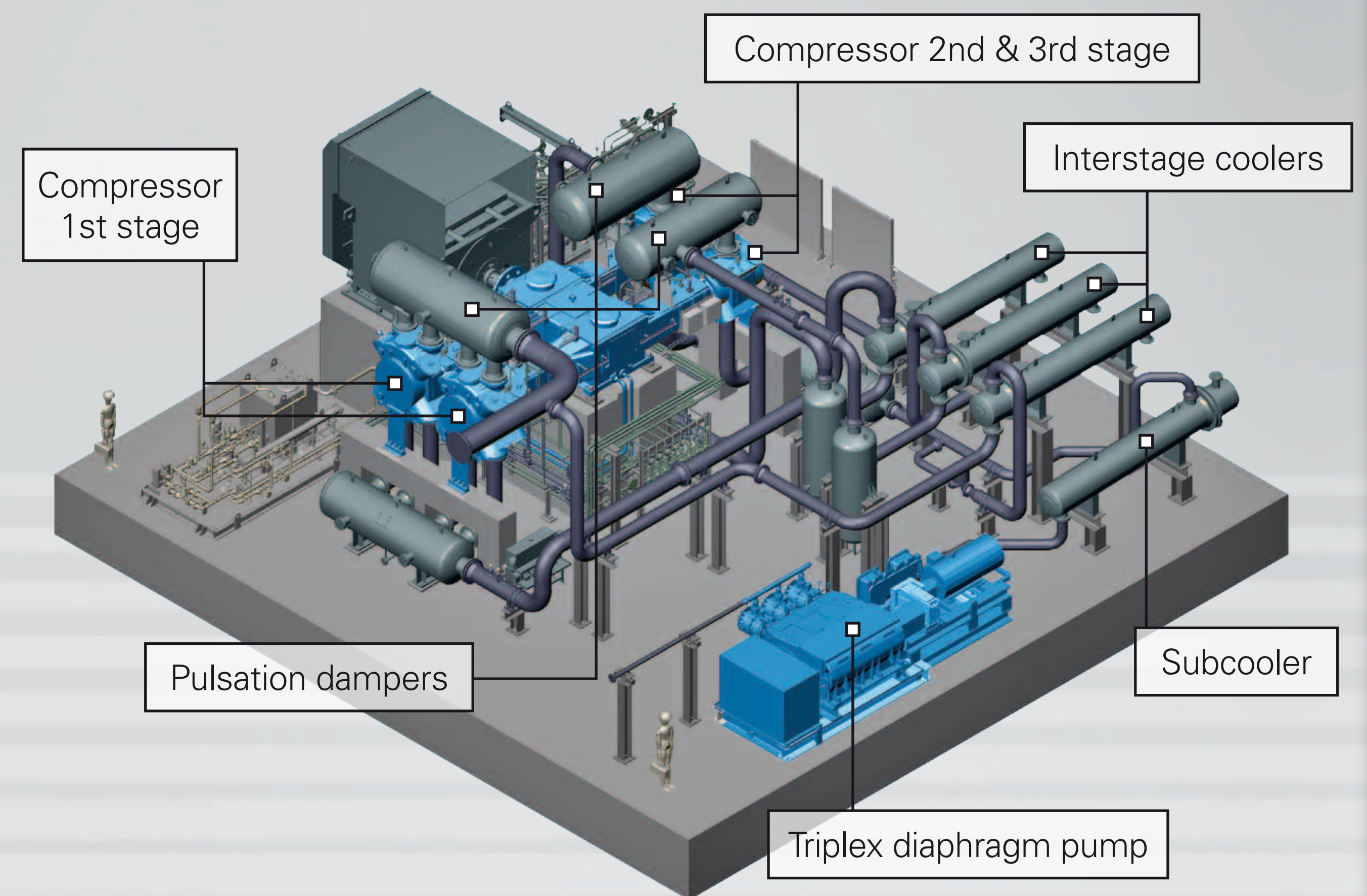
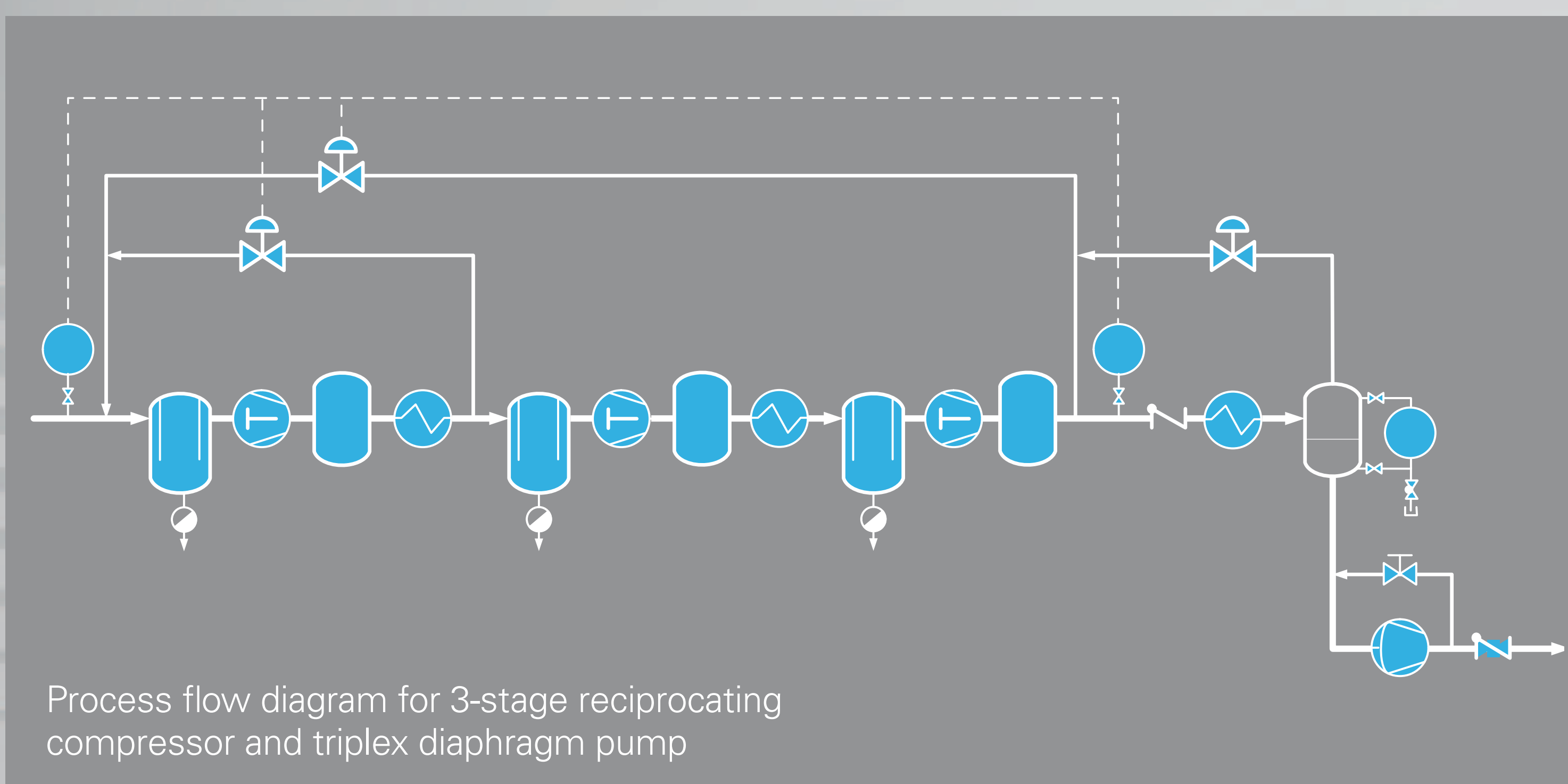
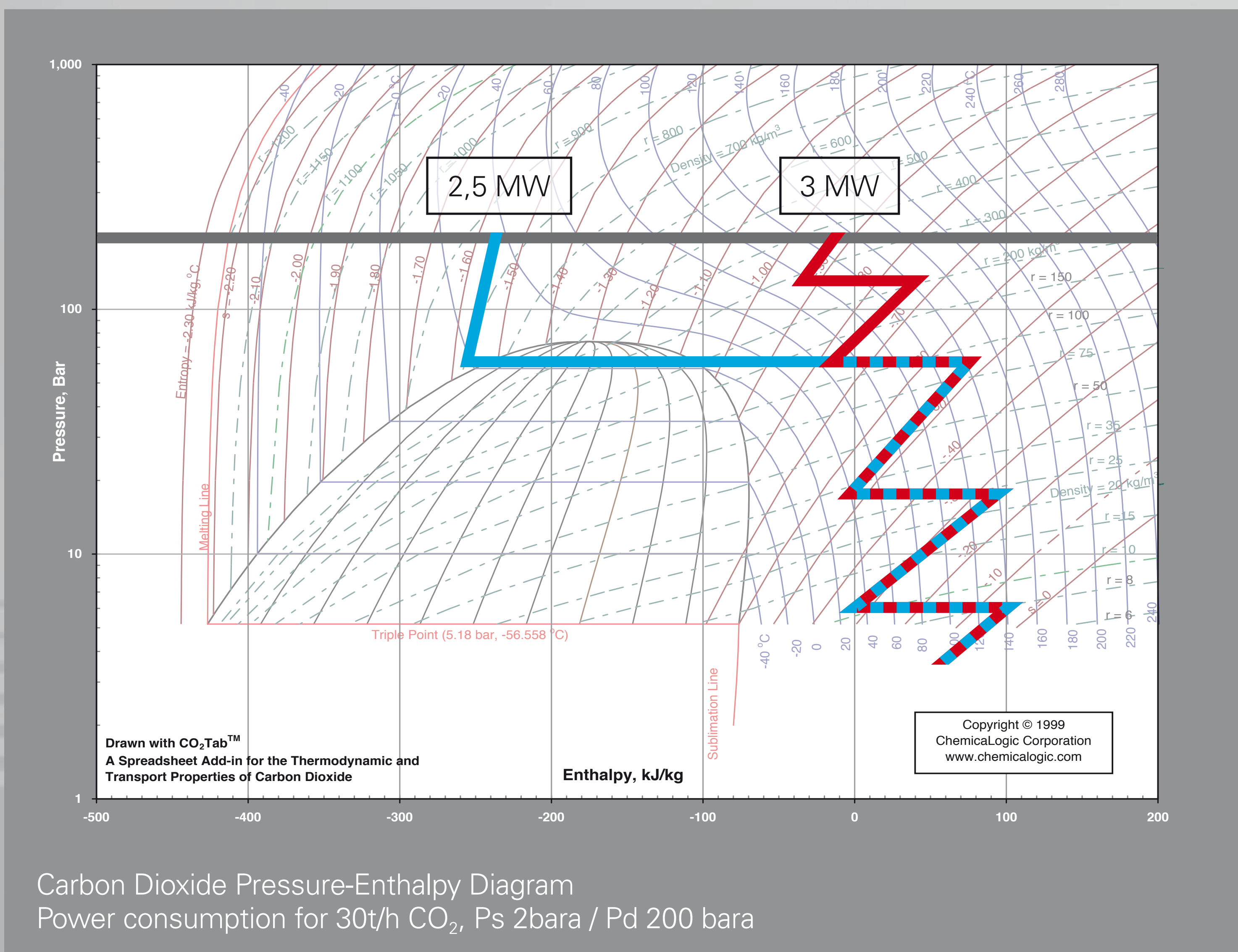
Rainer Dübi, Dr. Luzi Valär, Burckhardt Compression, Im Link 5, 8404 Winterthur, Switzerland
Dr. Josef Jarosch, Anke Braun, LEWA GmbH, Ulmer Straße 10, 71229 Leonberg, Germany

- Conventional way of compression

- 5 compressor stages
- Corrosion due to decompression in packing and sealing elements (stage 4 + 5)
- Increase on electrical power demand and stages due to high suction temperature
- 3 MW shaft power

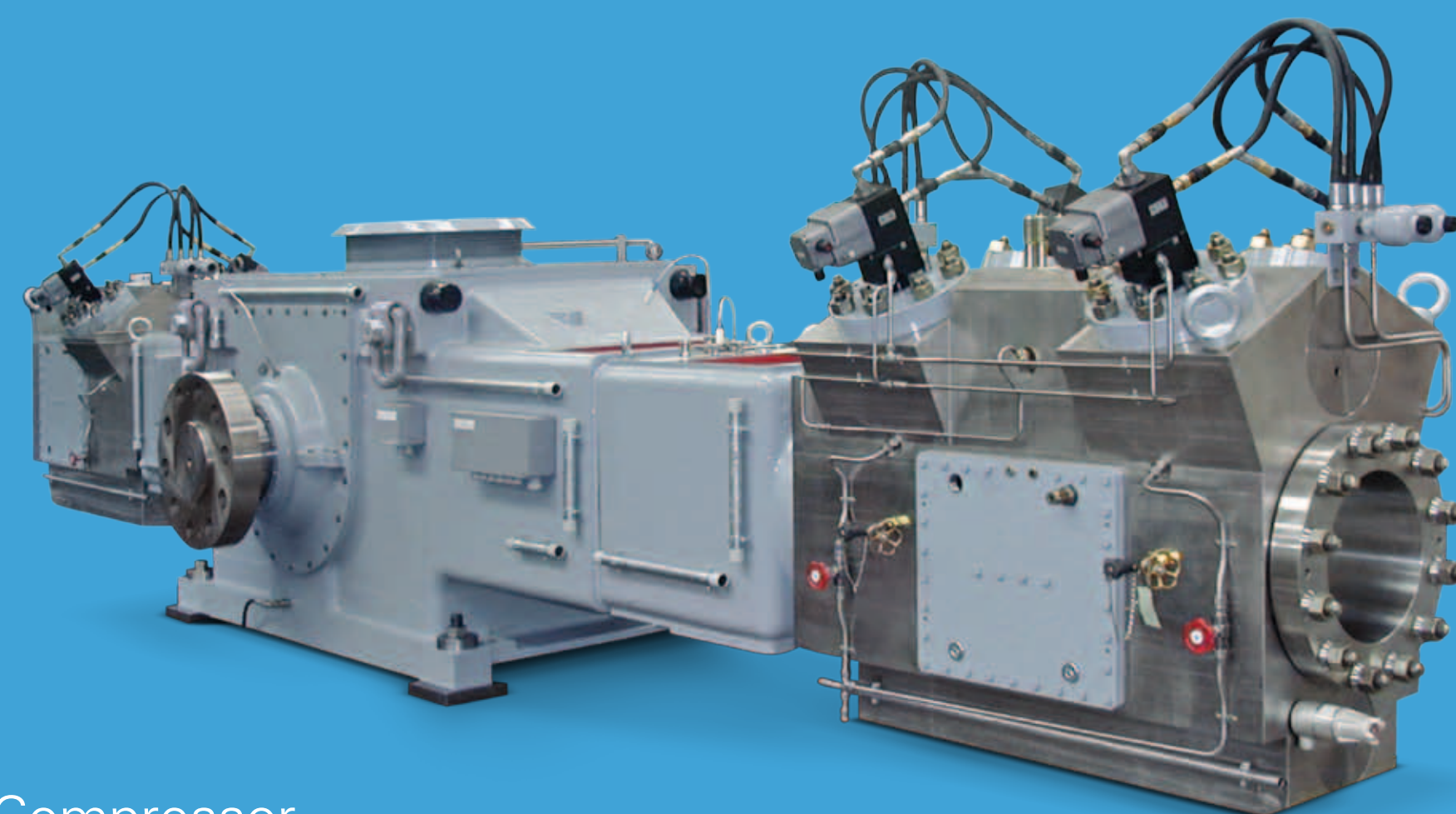
+ Combined way of compression

- 3 compressor stages + triplex diaphragm pump
- Subcooling to liquid phase
- 2,5 MW shaft power



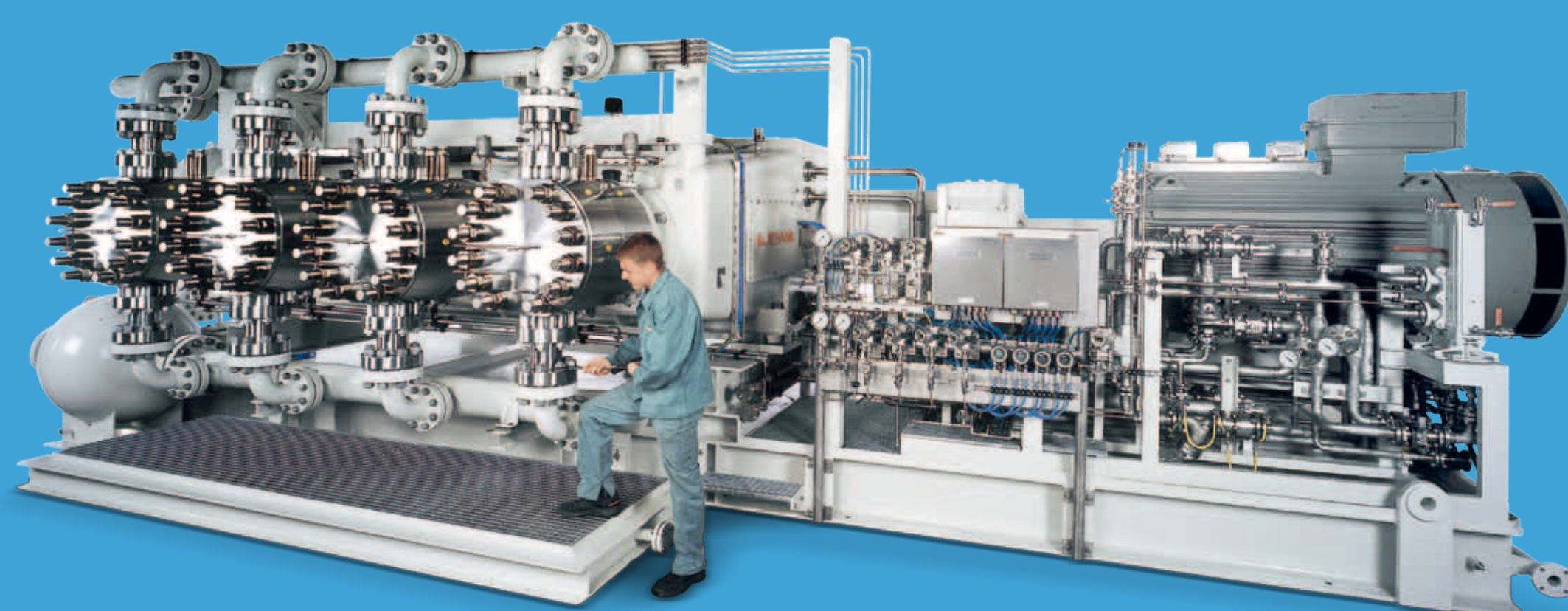
Plant layout for compressing 30t/h CO₂

- 33 t/h CO₂ wet
- Suction pressure 27 bara
- Discharge pressure 235 bara
- Shaft power 3800 kW



Burckhardt Compression BA Compressor
CO₂ compression at BASF

- 100 t/h CO₂
- Suction pressure 61 bara
- Discharge pressure 216 bara
- Hydraulic power 650 kW



LEWA Diaphragm Pump G4T
CCS at Snøhvit Gas Field

Advantages

- Electrical power saving ~15%
- Flexible operation
 - Part load
 - Energy efficiency in part load
 - Gas composition
 - Discharge pressure
- Combined solution offered in cooperation by Burckhardt Compression and LEWA

Limitations

- Mass flow ≤ 150 t/h
- Suction pressure: ≥ ambient pressure
- Discharge pressure: ≤ 500 bar
- Cooling requirement depending on mixture (~25°C pure CO₂)